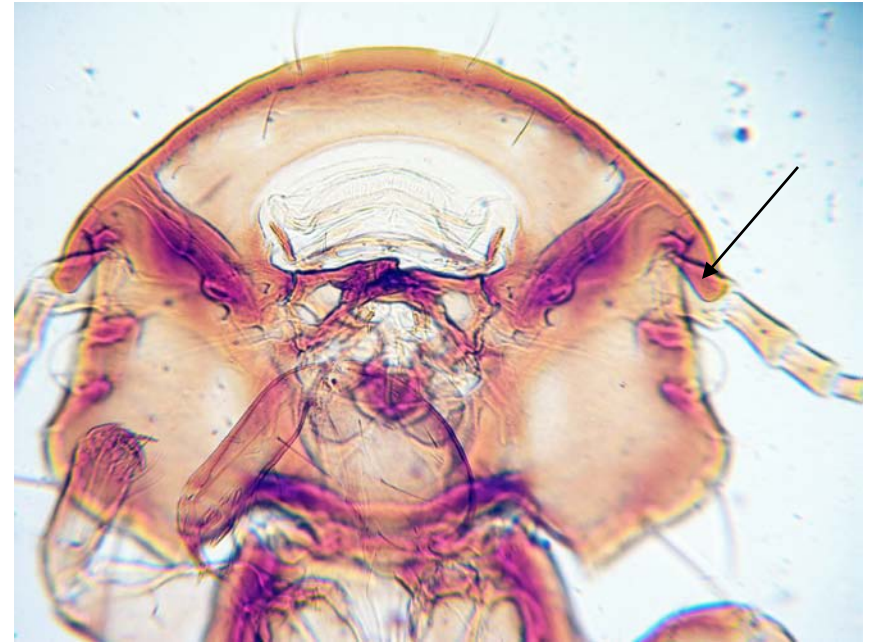
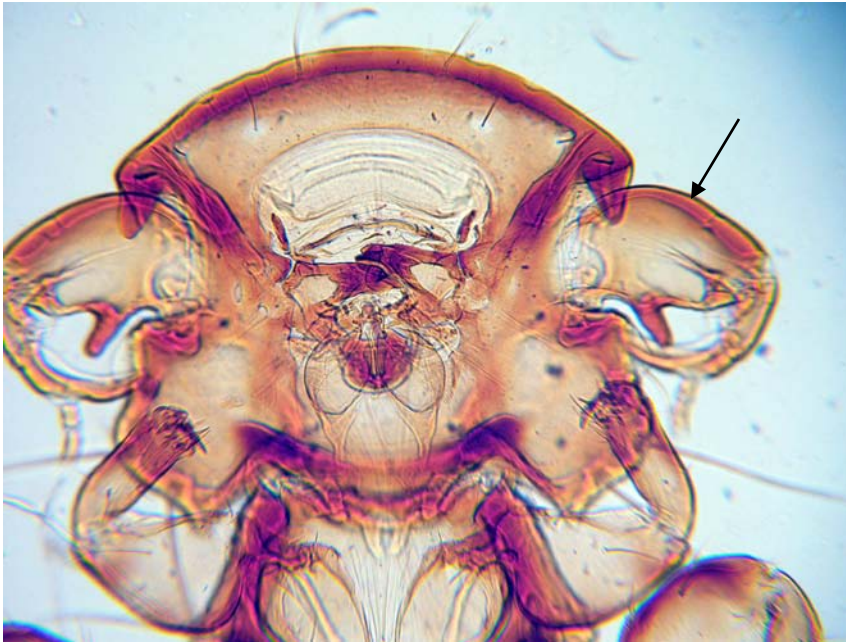


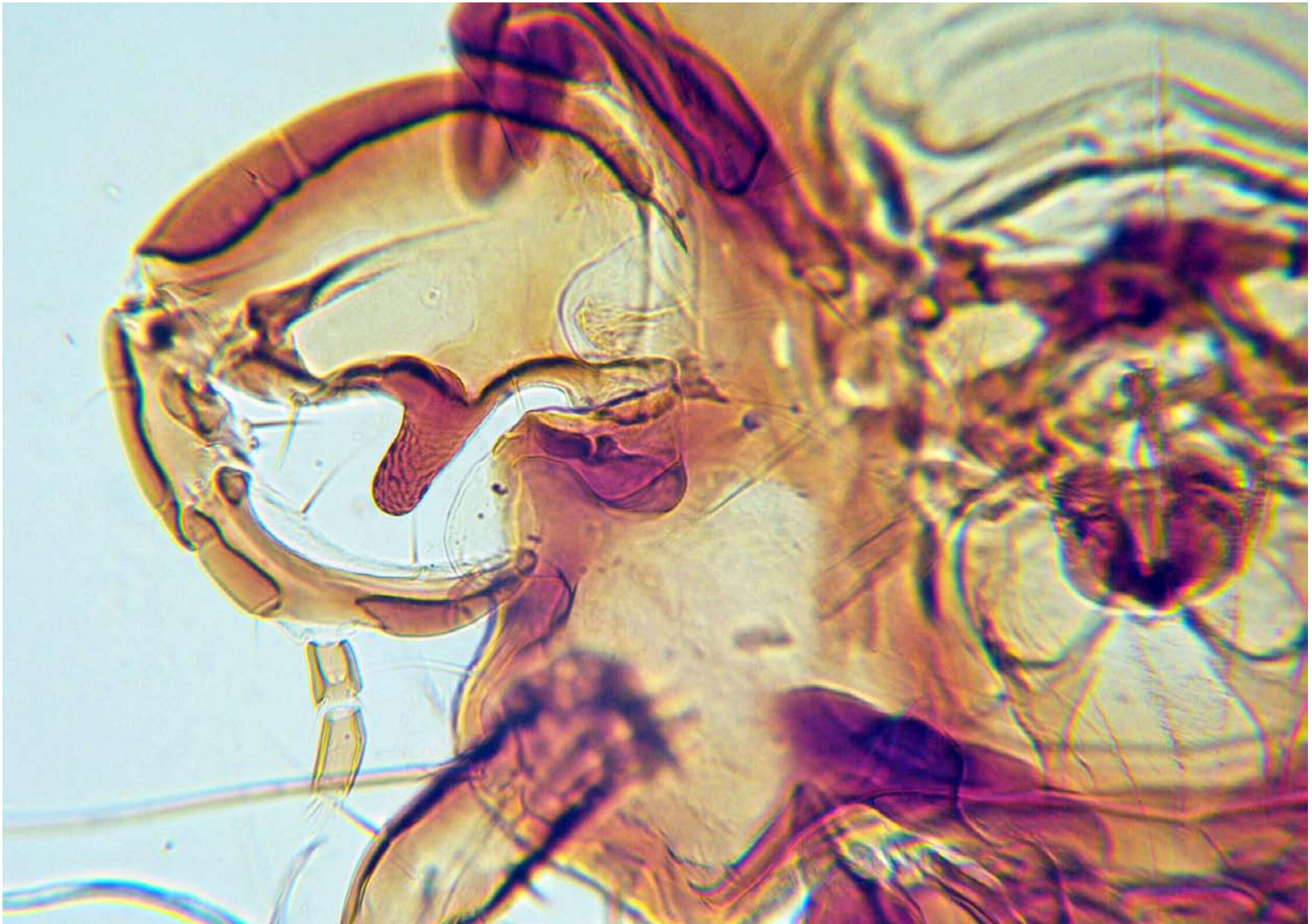
*Goniodes pavonis*; male (left), female (right).



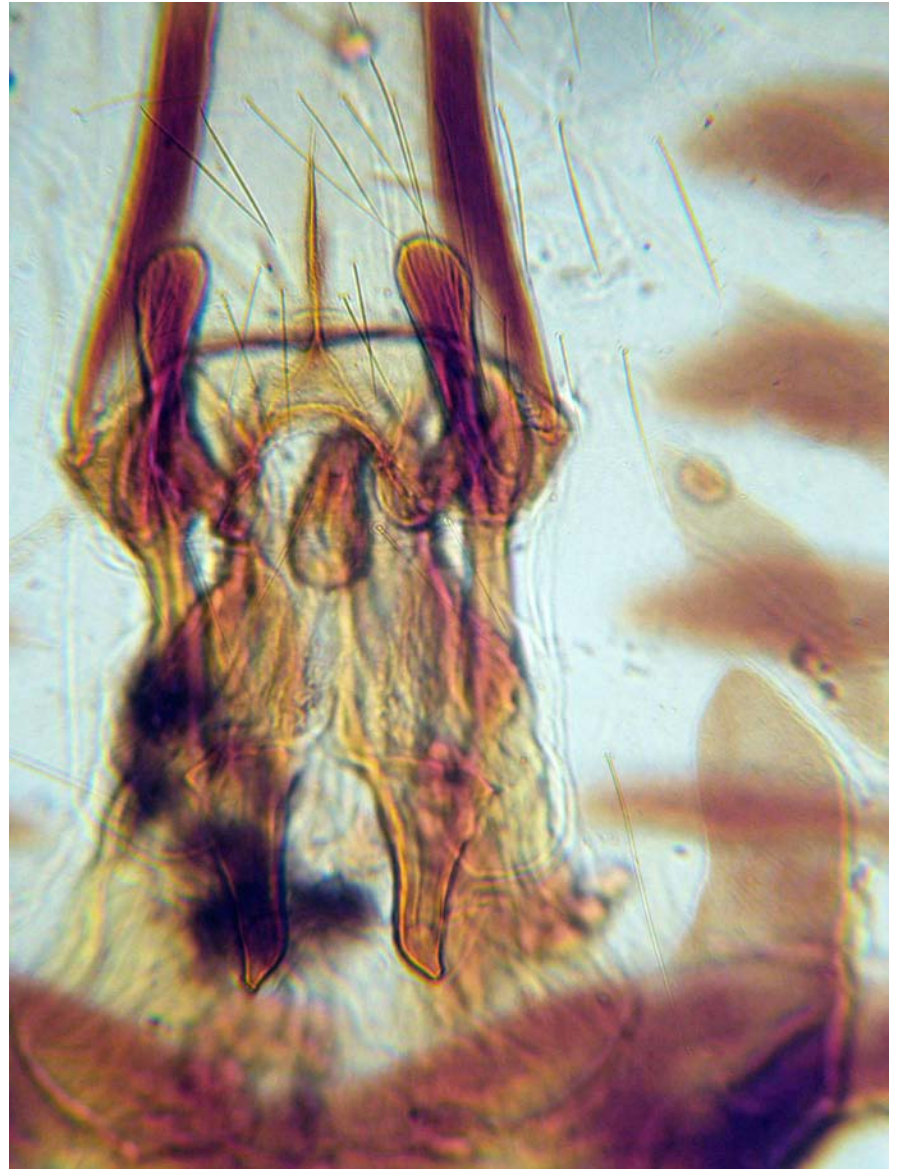
*Goniodes pavonis*; note enlarged 1<sup>st</sup> antennal segment of male vs. that of female (arrows).



*Goniodes pavonis*; male, antenna, enlarged.



*Goniodes pavonis*; male genitalia.



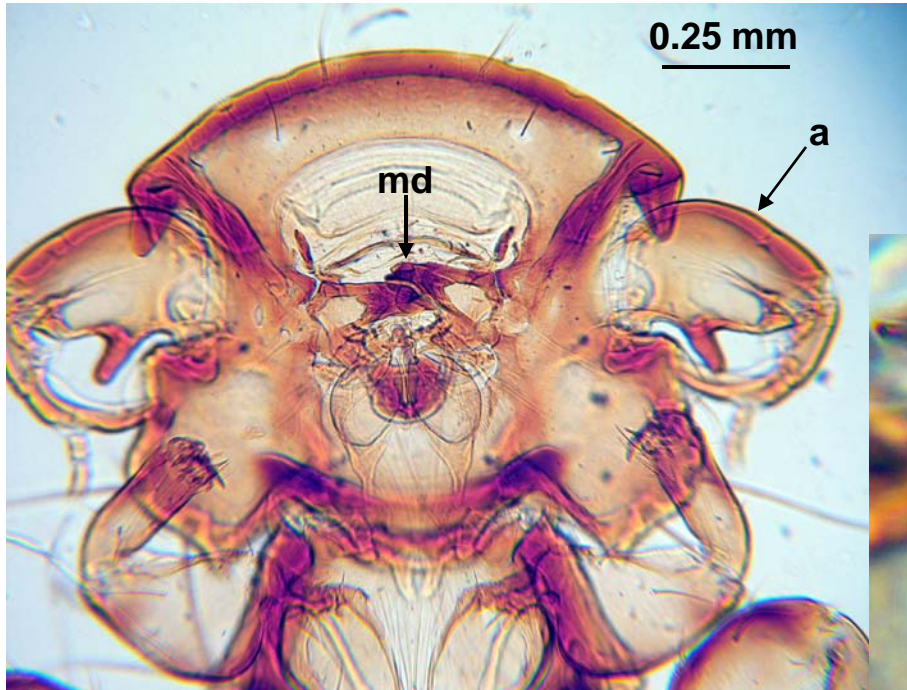
*Goniodes pavonis*; male, paratergal plates (p), spiracles (s) and trachea (t).



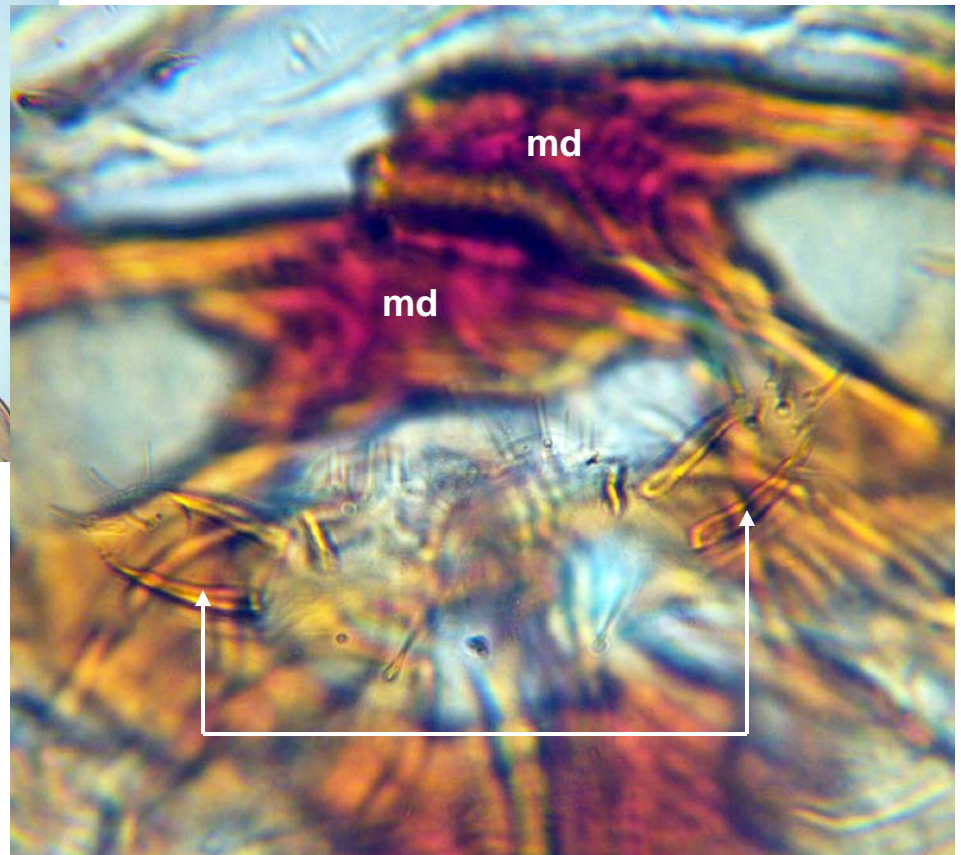
*Goniodes pavonis*; female, posterior.



*Goniodes pavonis*; male, head. Legend: a, antenna; md, mandibles.



Paired setae bearing structures indicated by arrows?



*Goniodes pavonis*; female, head.

Legend: a, antenna;  
md, mandibles. Setae bearing  
structures indicated by arrows?

